

HOLSTEIN



SURIBAY P

FR5344217393 • Born: 01/08/2021
KCn **AB** • BCn **A2A** • aAa **432561**
MALI P x GARIDO x KIRON

ISU
224

Health
+2,0

SEXED



OUTSTANDING ISU • COMPLETE PACKAGE SIRE

This amazing son of MALI P comes from the renowned family Miss Tradition Lolli EX-90. The great sires POLIBAY or SUNBAY also come from this same family. SURIBAY P is the polled leader for functional traits. He offers an extremely balanced profile with a lot of quality in production, health and type. He transmits a modern body, functional udders and very good feet & legs.

SIENNE P

FR1451886064 • Born: 12/09/2021
KCn **AB** • BCn **A1A1**
PACOLINE x KODIAC P x LAURENT

ISU
212

Ferti
+2,8



HIGHLY FUNCTIONAL • GREAT MODERN BODY

The polled sire SIENNE P offers a very original pedigree that makes him an easy bull to mate with. He provides excellent health traits, balanced production with sufficient milk and positive components. He transmits excellent udder attachments, width in the body and extremely strong feet & legs.

AURELIUS

DE000363188669 • Born: 17/08/2021
KCn **BB** • BCn **A2A2** • aAa **132**
ARROZO x HUEY x GYMNAST

ISU
212

F&L
+2,1



HIGH PRODUCTION TRAITS • PERFECT FEET & LEGS

AURELIUS is another offspring of the well-known breeding cow Sully Shottle May EX-91. He is a solid milk quantity bull with high components. Also in the whole health and functional traits he can convince. In terms of conformation he is an udder improver. In terms of movement and parallelism of the hind legs AURELIUS sets standards.

FAIRBANKS

DE000364300458 • Born: 28/01/2022
KCn **AB** • BCn **A1A2** • aAa **345**
FOREMAN x SIMON P x MY DREAM P

ISU
212

Inel
+83

SEXED



INCREDIBLE PROTEIN & FAT • VERY QUICK MILKING

FAIRBANKS goes directly back to none other than Sully Shottle May EX-91. His mother is the half sister to the top seller Rastor P. Fairbanks shines with high fat and protein % heredity, furthermore he shows high values in the total type index and all functional and health traits.

SHAKAPONK

FR2929586474 • Born: 18/12/2021
KCn **BB** • BCn **A1A1** • aAa **135246**
PINKFLOYD x GITAR x VANHALEN

ISU
210

Type
+4,2

SEXED



PERFECTLY BALANCED • EXCEPTIONAL FEET & LEGS

This exceptional son of PINKFLOYD is one of the most balanced sire. His profile combined with an original pedigree that goes back to the famous Sabrina Addison EX-92 cow make him an easy sire to use in matings. He provides an incredible milk quality, by very high components and by an excellent udder health. He also offers a modern body with a controlled stature and amazing feet & legs ensuring an excellent locomotion.

SOLISHER

FR44327232974 • Born: 05/11/2021
KCn **AA** • BCn **A1A2** • aAa **342516**
PACOLINE x GERRY x MEMBER

ISU
210

Milk
+1512



PERFECT MIX OF MILK & FUNCTIONALITY • EXCELLENT TYPE

SOLISHER is incredible for his combination of high milk potential, fertility, udder health and longevity. This great son of Pacoline comes from the famous cow Durham Sherry VG-87 and is preceded by extremely well classified dams. He transmits functional udders with a very strong ligament, a balanced body with width and especially excellent feet & legs.

SITOLO

FR4428406367 • Born: 29/10/2021
KCn **BB** • BCn **A1A1** • aAa **243156**
GENTO x HOTS P SUP x LUACES

ISU
207

Type
+3,6

SEXED



PROTEIN MAKER & HIGH FERTILITY • PERFECT UDDERS

SITOLO comes from the same family as the well-known sire ISITOLO. This strain, which is very popular in France and goes back to the Addison Rayal Bel VG-88 cow, has produced many AI sires. SITOLO provides a very good balance in production with a lot of protein. He also offers excellent daughter fertility, very fast milking and above all incredible hoof health. Furthermore, he transmits perfect udders for easy milking with amazing udder attachments.

SOLIXOR

FR2239995033 • Born: 06/05/2021
KCn **AB** • BCn **A2A2**
PERFECT x KONTEX x TABASCO

ISU
207

Prot
+0,38

SEXED



HIGH A2A2 PROT & MILK • GREAT DAUGHTER FERTILITY

This PERFECT son is the new descendant of the Merdrignac Typex VG-87 strain that has produced many AI sires including the famous sire LOUXOR. He provides an incredible production with milk in quantity and quality with a lot of A2A2 protein and fat. His daughters will be particularly fertile and have a very good longevity. He offers a moderate stature with good body condition and finally, extremely easy calving.

AIRCRAFT

DE000363106586 • Born: 25/05/2021

KCn **AE** • BCn **A1A2** • aAa **342**

ARROZO x GYMNAST x MISSOURI

EXCELLENT PACKAGE OF PROD & FERTILTY • MODERN BODY

At the very back of his pedigree, AIRCRAFT traces back to the Holstein foundation cow Von-Sun Crissy Elevation EX. His cow family has been developed over many generations of VG and EX classified cows in Germany. AIRCRAFT does not afford any fault in the functional and health traits. In addition, he is a pronounced udder sire and here especially his very shallow and well attached udders.

ISU
205

RLI
+1,0

SEXED



FRED RED P

DE000364104155 • Born: 17/11/2021

KCn **AB** • BCn **A2A2** • aAa **234**

FREESTYLE x SOLITAIR P x POLO P RDC

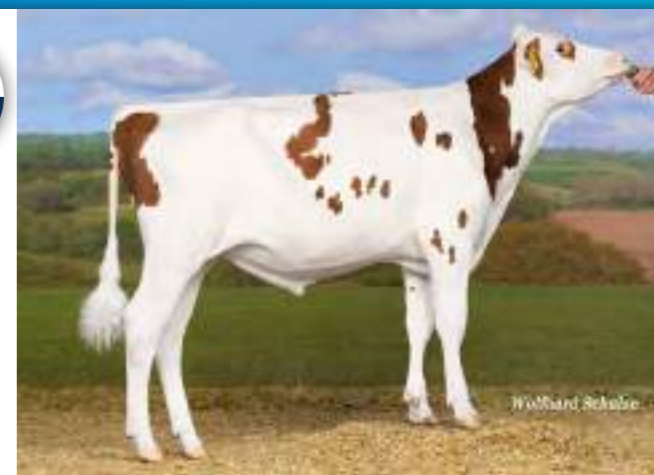
TOP RED & POLLED SIRE • IDEAL FOR LONG-LASTING COWS

This Freestyle son out of one of the most successful bull dams in Germany can convince all along the line. This German cow family convinces with capital, wide cows, which also cope absolutely problem-free in large farms. FRED RED P is a solid performance sire with alright components. Striking is the rare combination of a high somatic cells count with positive milkability. Also his linear can convince all along, especially his udder inheritance and total morphology is outstanding.

ISU
197

LGV
+3,5

SEXED



SORBON RF

FR2211469282 • Born: 20/11/2021

KCn **AA** • BCn **A1A1** • aAa **324156**

PELLEGRINO x GYWER x LOUXOR

BALANCED PROD & FUNCTIONALITY • OUTSTANDING UDDERS

SORBON RF is the reference for outstanding udders. He offers a lot of udder strength with superb attachments and a strong ligament. These qualities are combined with excellent udder health and daughter fertility. Finally, he transmits a very good production, balanced between milk quality and quantity. This superb sire comes from the strain of Diamond-Oak Marshall Amanda VG-85, as do the sires RENAULT PP and SUK P RF.

ISU
206

LGV
+3,3

SEXED



TYSON RED

FR5356775438 • Born: 28/01/2022

KCn **AB** • BCn **A2A2**

ROMAN RF x JAYVANO RF x MEGA-STAR

RED SIRE WITH INCREDIBLE PRODUCTION • QUICK MILKING SPEED

He is your new RED champion. TYSON RED will bring you all the ingredients to obtain the dairy cow you are looking for: an assured production both in quality and quantity combined with an incredible milking speed. From a pedigree that is easy to use on the red population, carrying beta casein A2A2, he transmits functional udders, a size with a lot of dairy strength on amazing feet & legs. He comes from the same family as THORPE RF.

ISU
195

F&L
+1,9

SEXED



THORPE RF

FR5356775435 • Born: 20/01/2022

KCn **AB** • BCn **A1A2** • aAa **234165**

ROMAN RF x NEESKENS x MEGA-STAR

THE KING OF PRODUCTION • PERFECT UDDERS & F&L

THORPE RF is our champion in production traits. This son of ROMAN RF offers all the qualities we are looking for in an AI sire. He perfectly combines milk, fertility, calving ease and exceptional type traits. He transmits a very balanced modern body, excellent feet & legs, and extremely functional udders with a strong ligament and superb udder attachments to support the milk volume.

ISU
206

Milk
+1515

SEXED



GERRY

DE001405290992 • Born: 12/12/2017

KCn **AA** • BCn **A2A2** • aAa **243**

GYMNAST x BATTLECRY x MODEL

TOP PROVEN SIRE WITH HIGH A2A2 MILK • EXCELLENT FERTILITY

GERRY goes back in his pedigree to none other than GBM Val Blackstar Jean EX-94. He is more of a milk quantity bull with very good scores for daughter fertility, udder health and longevity. He sires superior rear udders with correct teat placement. His feet & leg inheritance can also be described as impeccable.

ISU
193

Milk
+1233

SEXED



SIRI PP RF

FR4457925392 • Born: 11/09/2021

KCn **BB** • BCn **A2A2** • aAa **423516**

SPICE P x KERROSS x ADAGIO-P

INCREDIBLE HOMOZYGOUS POLLED • HIGH A2A2 BB MILK

SIRI PP RF is the homozygous polled reference. This son of SPICE P offers a differentiating pedigree and above all many qualities. He provides a very good production with A2A2 and BB protein. He also has excellent udder health and daughters fertility. He transmits functional udders with long teats and a well balanced body. He ensures excellent locomotion thanks to his strong feet & legs. He comes from a strong family both in production and longevity.

ISU
193

Milk
+1112

SEXED



OXTERRIL

FR4421471430 • Born: 14/04/2018

KCn **BB** • BCn **A2A2**

SURGEON x HEFALO ISY x AVIC SHO

THE PRODUCTIVE PROVEN SIRE • GREAT FUNCTIONAL TRAITS

OXTERRIL is our new TOP proven sire that brings a lot of milk and A2A2 and BB protein. This SURGEON son is easy to use in matings because of his complete profile and his original pedigree. He comes from an organic farm that has produced many excellent sires like PROTERRIL and SUMMUM. He offers exceptional health combined with a complete and modern type thanks to his moderate stature and superb udders.

ISU
191

Milk
+1216





The leading European cattle breeding company,
built on the expertise and forces of MASTERRIND and INNOVAL.
Our expertise is to accompany worldwide farmers with innovative genetic solutions
to achieve their business goals, to farm sustainably while enjoying work and life.



37 000
member
farmers



Dairy and Beef
cattle:
20 breeds



**Largest
breeding
company**
in Europe

Large variation
of farms:

50 - 2 000
COWS



Goats:
3 breeds



8 Million units sold
worldwide, active in
80 countries



Most diverse
**breed
portfolio**